

weltTEC®
made by **MN**
made in Germany

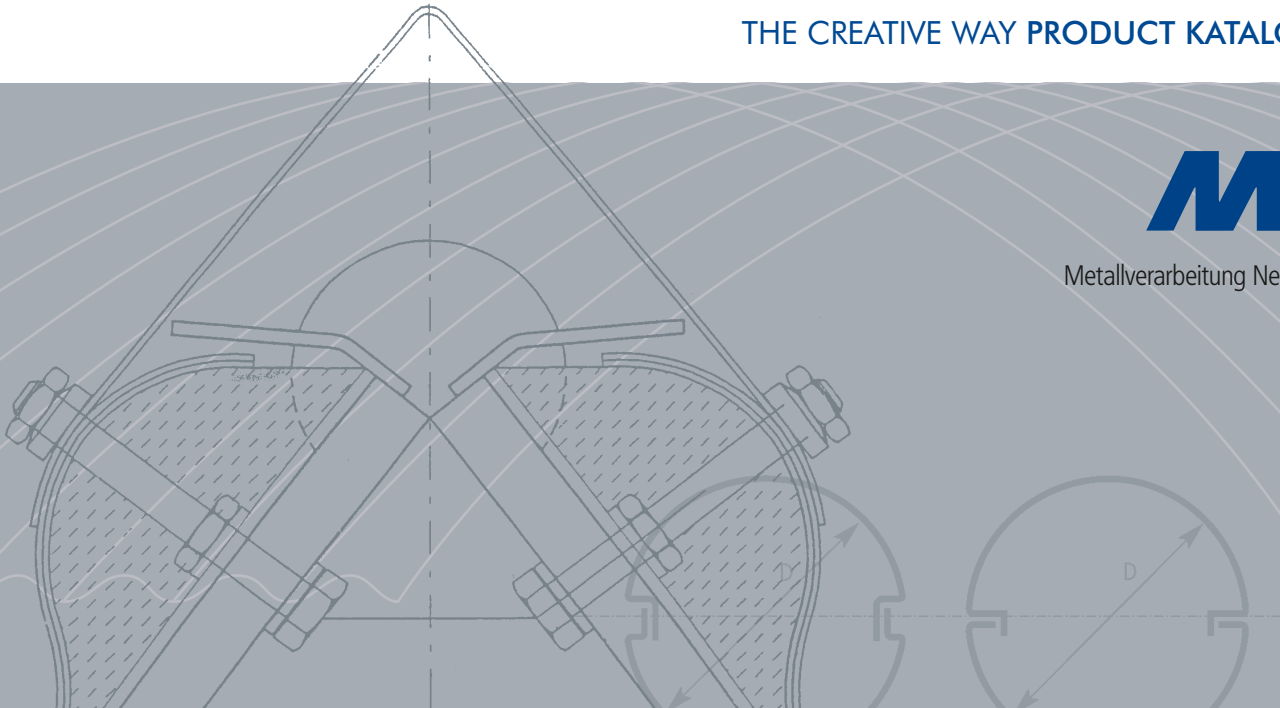
colTEC®
made by **MN**
made in Germany

planTEC®
made by **MN**
made in Germany

THE CREATIVE WAY PRODUCT KATALOG 2009

MN®

Metallverarbeitung Neustadt GmbH





wellTEC® – creative corrugated, trapezoidal or zigzag profiles

Discover new vistas for design and architecture with wellTEC®. A wide variety of shapes, materials and surfaces give free rein to your creativity when designing facades, roofs and walls. As a result of our many years of experience in the

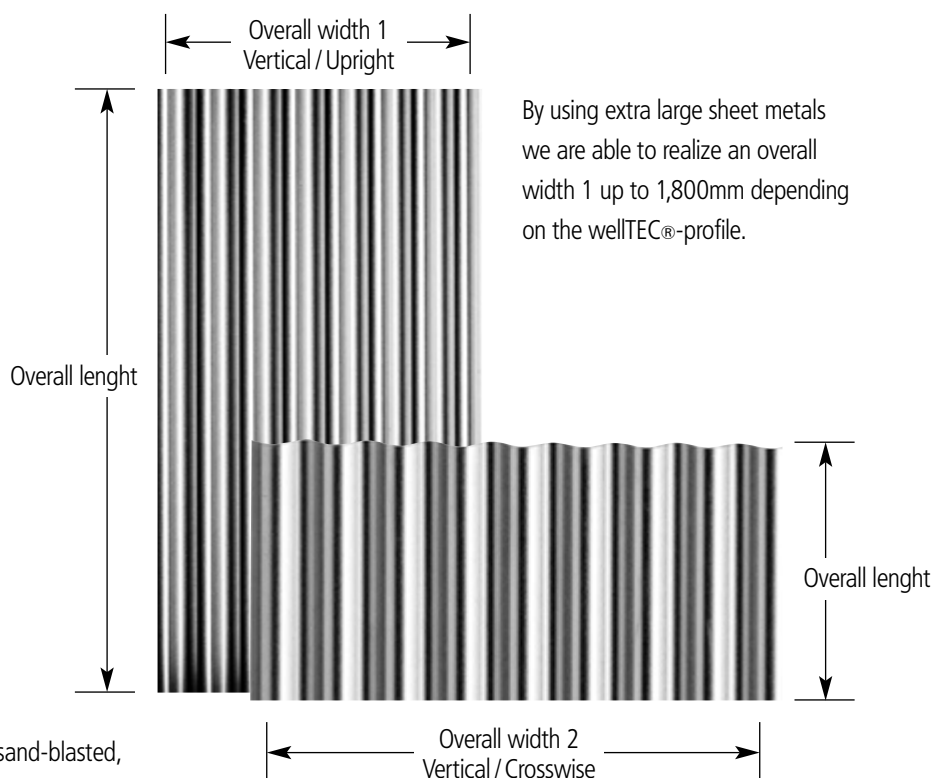
development of wellTEC®, we are able to meet even unusual requirements quickly and professionally. From advice to production- and, if required, even installation on suitable sub-structures – everything one-stop.

Material

- High-grade steel
- Steel
- Aluminium
- Brass
- Titanium zinc
- Copper as well as other metals

Surfaces

- In any finish desired, e.g. pickled, polished, sand-blasted, textured, with PE and PVDF varnish coats



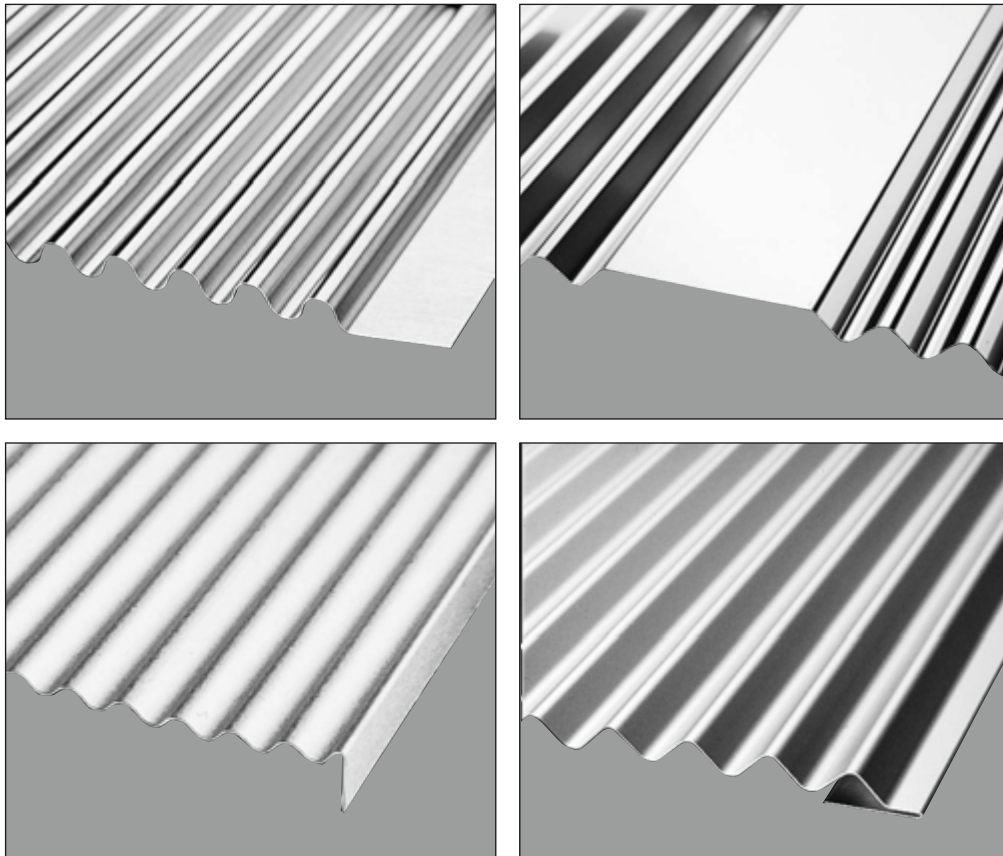
We manufacture according to your desires and requirements

- In sizes up to 5,000 mm panel length or overall width
- In thickness from 0.5 mm to 5 mm

When ordering, please specify the desired shapes and panel sizes. Limited sizes for brass and copper are available on request. Special sizes in other materials are also available on request.

Edges

wellTEC[®] can be fixed by means of individually designed edge elements without any need for additional angles or sheets, thereby affording a unique additional opportunity of compensating for any existing irregularities at the Owner's site.



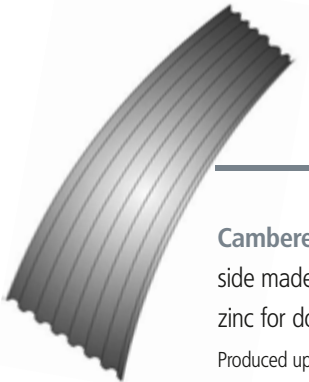
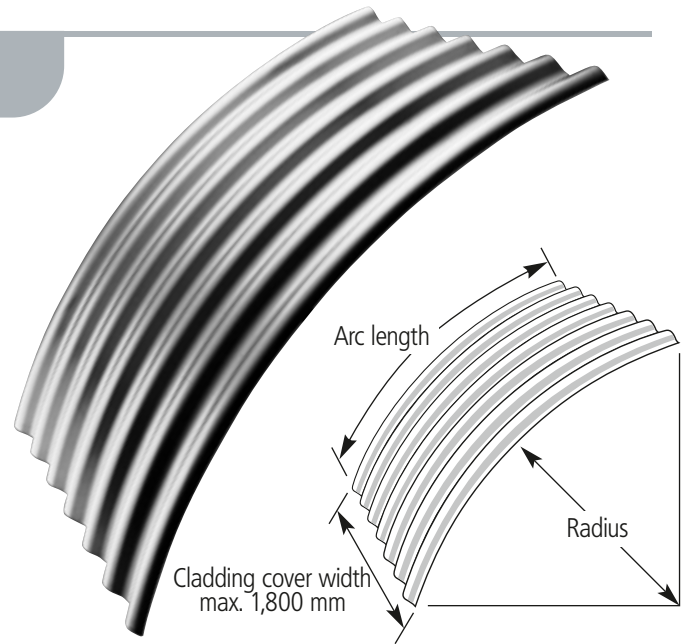


Bowing

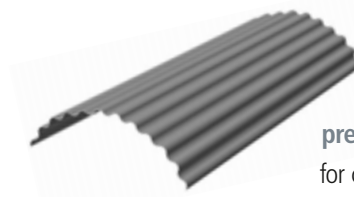
wellTEC® features not only include flat sections and bends with the corrugation, but also crown bowing.

Crown bowing means the crown is bent against the corrugation profile. Areas of application are in tunnel linings, special waggons and canopy roofs.

Crown bowing also permits progressive narrowing of the overall width toward one end. This makes wellTEC® an outstanding option for covering roof cupolas, for example.



Cambered corrugation, upset on one side made from aluminium and titanium zinc for domes.
Produced upon request.



pre-rounded wellTEC® element for columns, gullies etc.
Produced upon request.

Note

Sheet thickness: $t = 0.5 - 1.0 \text{ mm}$

smallest radius for sheet thickness:

$t = 0.5 \text{ mm} = 3,000 \text{ mm}$

$t = 0.7 \text{ mm} = 1,200 \text{ mm}$

$t = 1.0 \text{ mm} = 1,000 \text{ mm}$

Cambered sheets made of aluminium, steel and stainless steel:

- for technical reasons 200 mm at each end of the sheet are left uncambered (G)
- length of sheet upon request

For your order we need the following information:

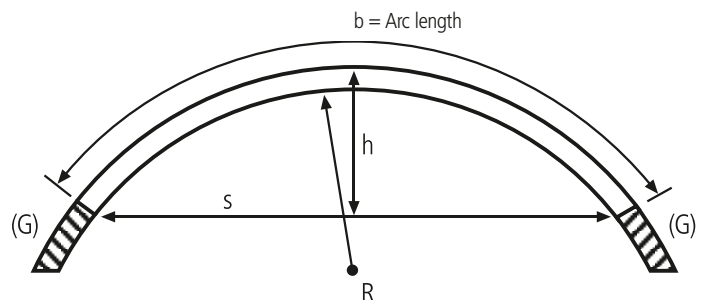
$b = \text{arc length}$

$s = \text{chord}$

$h = \text{height}$

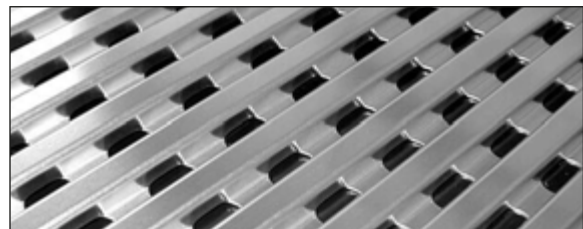
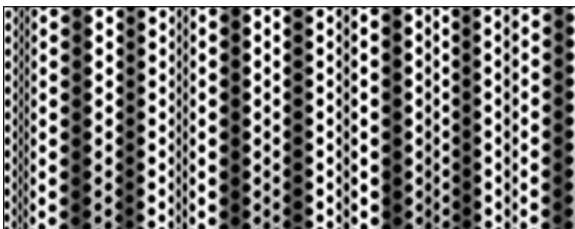
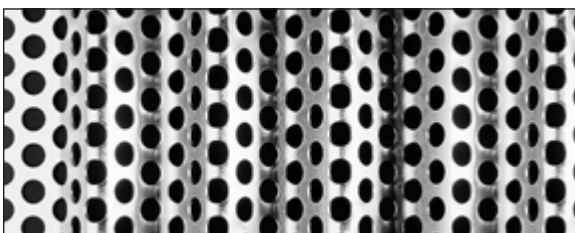
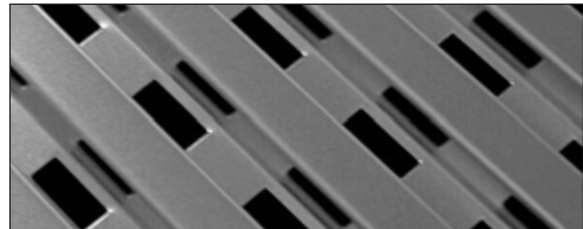
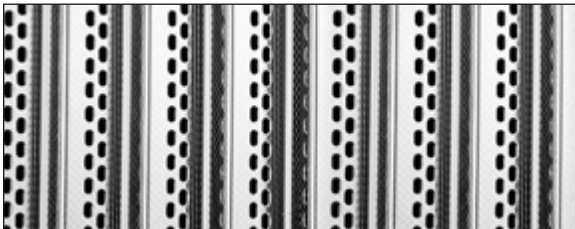
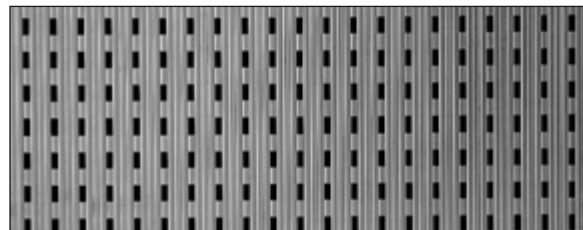
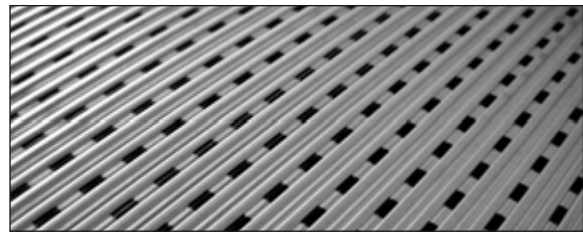
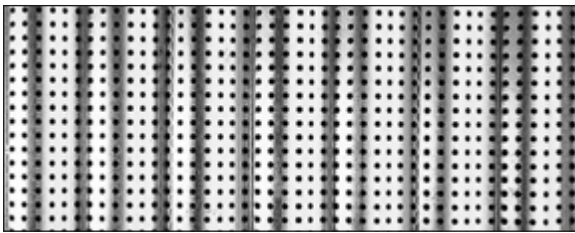
$R = \text{radius}$

(all measurements in millimetre)

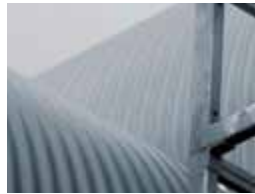


Perforations

Various options can be supplied, either over entire areas or with partial perforation.



Additionally fretwork and recesses for speakers, lamps, beams, fixing holes etc. can be added to any corrugated sheet.



MM® Art. No.	Sketch	max. panel length in mm
<p>W-1.5/3</p> <p>also available as metal plates curved in two planes</p>		3,000
<p>W-1.5/5</p> <p>also available as metal plates curved in two planes</p>		3,000
<p>W-2.5/9</p> <p>also available as metal plates curved in two planes</p>		3,000
<p>W-4/10</p>		1,500
<p>W-6/15</p> <p>also available as metal plates curved in two planes</p>		3,000
<p>W-6/32</p> <p>also available as metal plates curved in two planes</p>		5,500
<p>W-8/25</p> <p>also available as metal plates curved in two planes</p>		5,500
<p>W-8/120</p> <p>also available as metal plates curved in two planes</p>		5,500
<p>W-10/60</p> <p>also available as metal plates curved in two planes</p>		5,500

Group W (Profiled Corrugated Sheets)

MM® Art. No.	Sketch	max. panel length in mm	
W-15/40		5,500	
W-18/76 also available as metal plates curved in two planes		5,500	
W-20/50		5,500	
NEW	W-20/70		5,500
W-27/100 also available as metal plates curved in two planes		5,500	
W-27/111 also available as metal plates curved in two planes		5,500	
W-30/135		5,500	
W-40/125		5,500	
W-42/160		5,500	



Group W (Profiled Corrugated Sheets)

Art. No.	Sketch	max. panel length in mm
W-45/60		5,500
W-45/129		5,500
W-48/100		5,500
W-45/150		5,500



Group T (Trapezoidal Sheets)

Art. No.	Sketch	max. panel length in mm
T-2.5/82		5,500
T-3/20		3,000
T-10/30		3,000



Group T (Trapezoidal Sheets)

MM® Art. No.	Sketch	max. panel length in mm
T-15/45		3,000
T-20/60		5,500
T-25/75		5,500
T-26/167		5,500
T-50/150		5,500
T-100/275		5,500
T-21/146		5,500
T-35/125		3,000



Group Z (Zigzag Sheets)

MN [®] Art. No.	Sketch	max. panel length in mm
Z-10/30		3,000
Z-15/30		3,000
Z-15/45		5,500
Z-20/60		3,000
Z-25/80		5,500
Z-50/120		3,000
Z-13/26		5,500
Z-20/40		5,500

For outdoor use **MN** provides these fanfold profiles with a variable screw plate (e.g. SZ-35/35-R; find more profiles in Group S, pages 11, 12 and 13).





Group S (Extra profiled plates)

MM[®] Art. No. Sketch max. panel length in mm

ST-H-R

3,000 / 5,500

SW-H-R

3,000 / 5,500

SZ-H-R

3,000 / 5,500

SZ-A-R

3,000

NEW

Sample 1

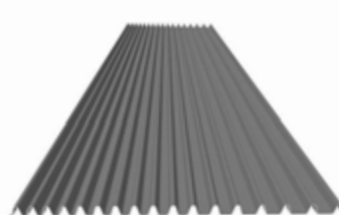
Flat sections can be realized nearly within every profile.



NEW

Sample 2

Varying axes can be realized nearly for every profile.



The basic forms for Group S can be found under Group W/T and Z. The quoted dimensions between axes are minimum.

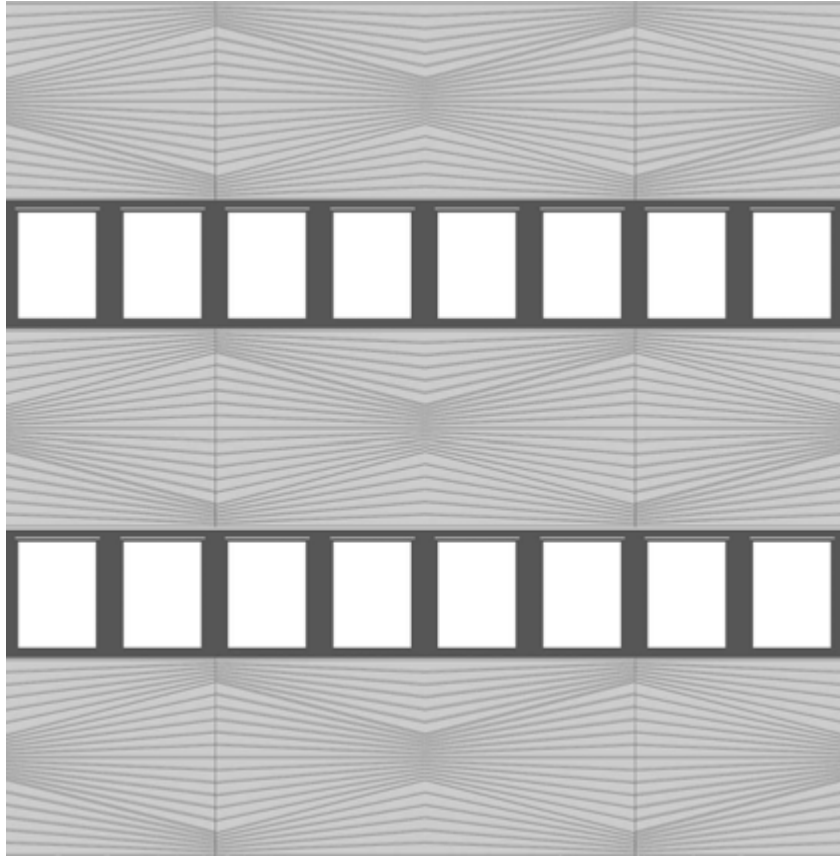
The dimensions between axes in Group S can be increased variably through use of vertical plates.



NEW

Sample 3

RAUTE



RAUTE



Can be realized nearly for every profile.

Group S (Extra profiled plates)

MN® Art. No.	Sketch	max. panel length in mm
SQ-5/5-R		3,000
SQ-12/12-R		5,500
SQ-20/20-R		5,500
SZ-25/50-R		3,000
SZ-35/35-R		5,500
b ₁ min. 68.50 mm	min. 68.50 mm	

The basic forms for Group S can be found under Group W/T and Z. The quoted dimensions between axes are minimum. The dimensions between axes in Group S can be increased variably through use of vertical plates.



Group S (Extra profiled plates)

MM Art. No.	Sketch	max. panel length in mm
SZ-30/60-R b ₁ min. 70 mm		3,000
SZ-39/60-R b ₁ min. 100 mm also available cambered, only in b ₁ = 100 mm		5,500
SW-25/113		3,000
SR-15/40-R		5,500
SR-15/22-R b ₁ min. 57 mm		3,000
ZW-1.5/4		3,000
WW-1.5/5		3,000



Group SP (Specially profiled plates)

Registered design number
of the German patent: 202 02 872.0

MM [®] Art. No.	Sketch	max. panel length in mm
SP1-40/50-R b ₁ min. 100 mm		3,000
SP1G-40/50-R b ₁ min. 100 mm	<p>perforated</p>	3,000
SP2-40/50-R b ₁ min. 75 mm		5,500
SP2G-40/50-R b ₁ min. 75 mm	<p>perforated</p>	5,500
SP3-50/60-R b ₁ min. 100 mm		3,000
SP3G-50/60-R b ₁ min. 100 mm	<p>perforated</p>	3,000



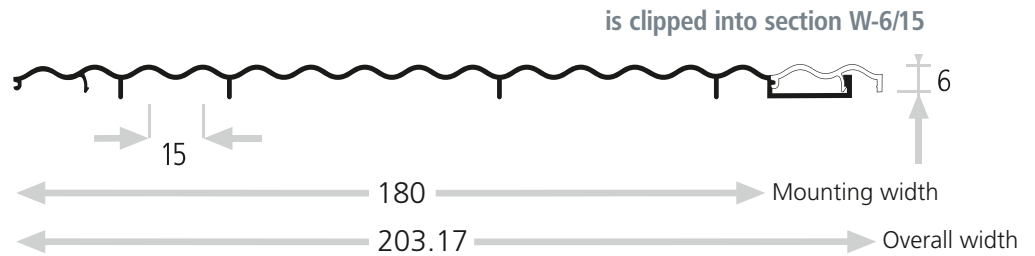
Extruded panel

MM® Art. No.

Sketch

W-6/15

End section
Top



Thickness 1.5mm

W-6/15

End section
Below



is clipped into section W-6/15

Construction elements made from aluminium: extruded panel W-6/15 including lower and upper end panel for concealed screw connection.

An individual colour scheme according to RAL and NCS by powder coating offers several possibilities for designing.



Material

- Stainless steel
- Steel
- Aluminium
- Brass
- Copper and all other materials

We produce to your wishes

· Dimensions

- In lengths up to 5,000 mm, other lengths on request
- In thickness from 0.75 mm to 4 mm

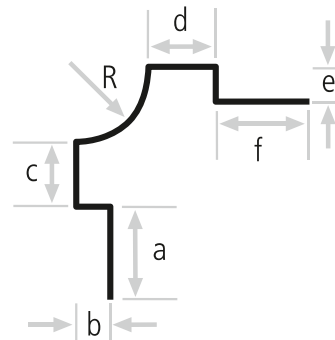
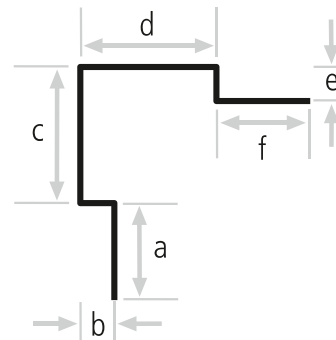
· Surfaces

- In any desired finish, e.g.: rolled bright, coated or pickled, polished, blasted, textured, PE- and PVDF-varnishes.

· Fabrication

Of course we will cut the sheets to any desired length and width, with any types of edging, hole patterns and contours.

Please state the desired shapes and overall lengths when ordering. Limited dimensions for brass and copper apply on request. Special sizes in other materials are likewise available on request. Add this completed form to your order/fax.





Serie E

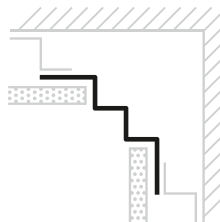
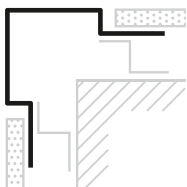
MN Art. No.

Sketch

Sketch

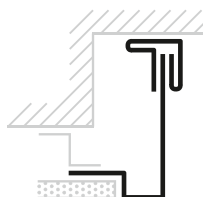
MN Art. No.

E 01
Outer corner



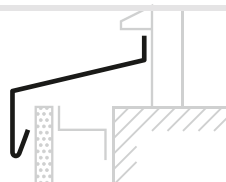
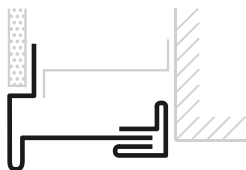
E 02
Inner corner

E 03
Pilaster strip



E 04
Soffit

E 05
Lintel



E 06
Window ledge



Serie R

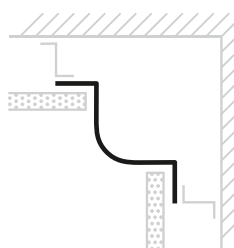
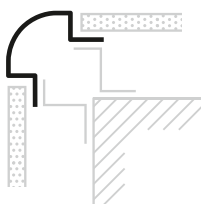
MN Art. No.

Sketch

Sketch

MN Art. No.

R 01
Outer corner



R 02
Inner corner



Serie R

MM® Art. No.

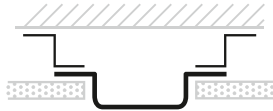
Sketch

Sketch

MM® Art. No.

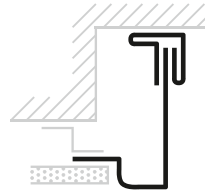
R 03

Pilaster strip



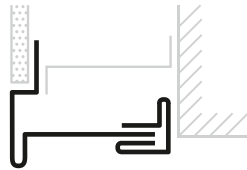
R 04

Soffit



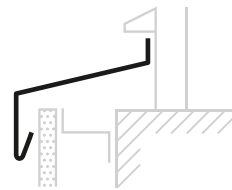
R 05

Lintel



R 06

Window ledge



Serie B

MM® Art. No.

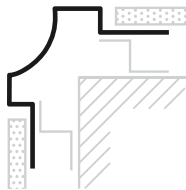
Sketch

Sketch

MM® Art. No.

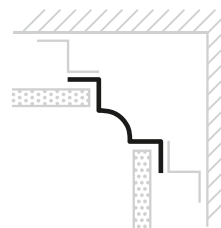
B 01

Outer corner



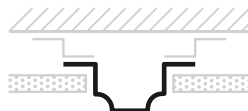
B 02

Inner corner



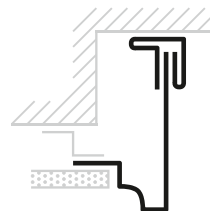
B 03

Pilaster strip



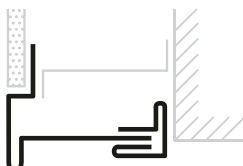
B 04

Soffit



B 05

Lintel



B 06

Window ledge





MM® Art. No.	Sketch	Sketch	MM® Art. No.
<p>K 01</p> <p>Outer corner</p>			<p>K 011</p> <p>Outer corner</p>
<p>K 02</p> <p>Inner corner</p>			<p>K 021</p> <p>Inner corner</p>
<p>K 03</p> <p>Pilaster strip</p>			<p>K 031</p> <p>Pilaster strip</p>
<p>K 04</p> <p>Soffit</p>			<p>K 041</p> <p>Soffit</p>
<p>K 05</p> <p>Lintel</p>			<p>K 06</p> <p>Window ledge</p>



MN ® Art. No.	Sketch	Sketch	MN ® Art. No.
<p>S 01</p> <p>Outer corner</p>			<p>S 02</p> <p>Inner corner</p>
<p>S 03</p> <p>Pilaster strip</p>			<p>S 031</p> <p>Pilaster strip</p>
<p>S 04</p> <p>Soffit</p>			<p>S 05</p> <p>Lintel</p>
<p>S 06</p> <p>Window ledge</p>			

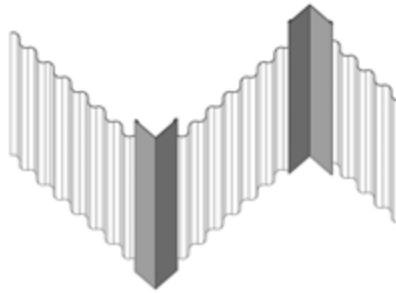


Edge parts, steel, aluminium, stainless steel or titanium zinc

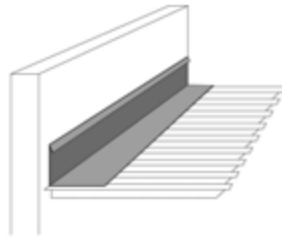
MM® item

examples

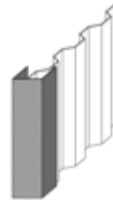
Corner



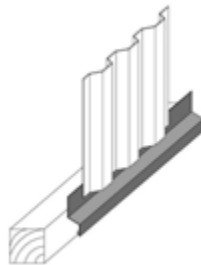
Pent connection



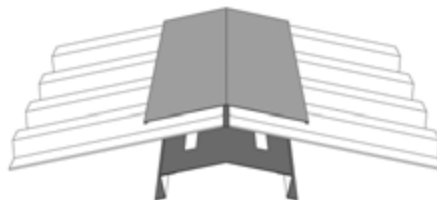
Door enclosing



Root point



Ridge

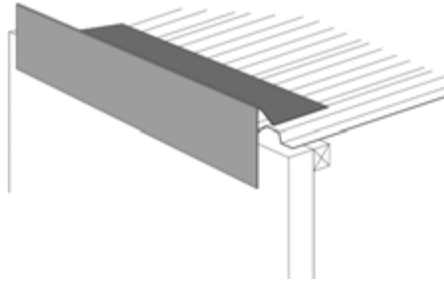


Connection Profile Standard

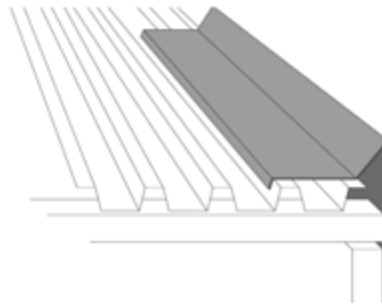
MM® item

examples

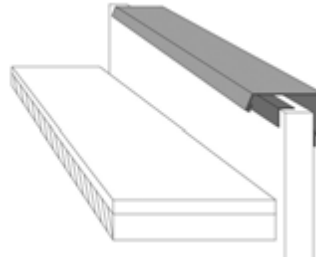
Pent roof connection



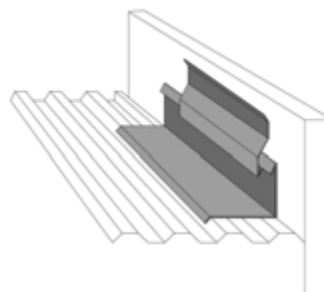
Verge



Parapet



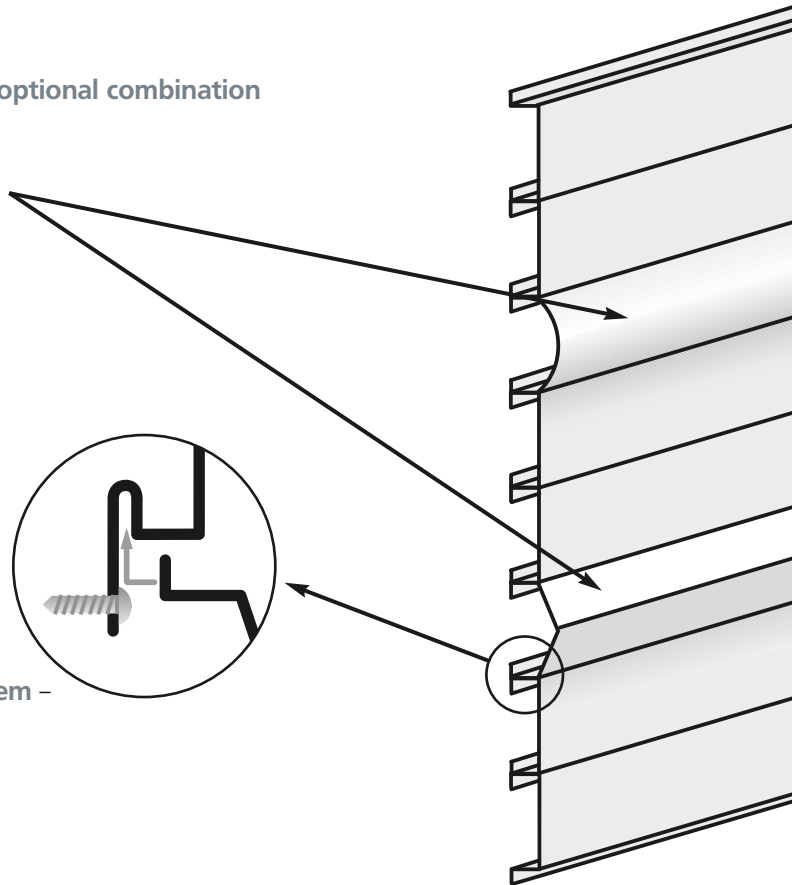
Wall connection





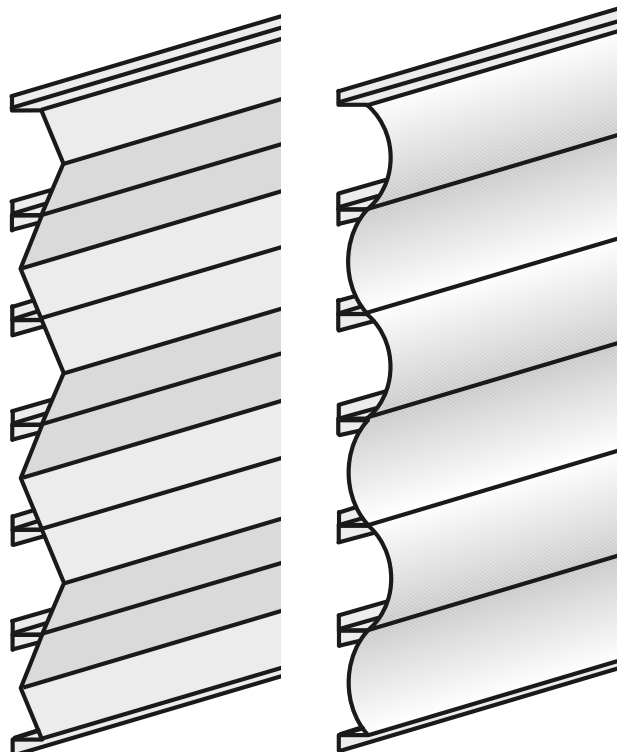
The variable Modular System

Highlight facade areas by an **optional combination** with other contours.



The **MIN-Assembly-System** – Simple and economical.

The alternate arrangement of convex and concave profiles produces corrugations in new sizes and dimensions.



wellTEC® Giga® Cassette System

Registered design of the German patent: 200 09 696.6

Cassette lengths up to 6,000 mm

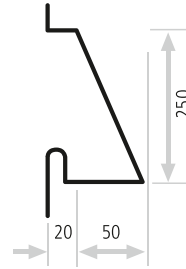
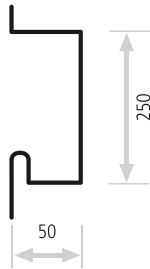
MM® Art. No.

Sketch

Sketch

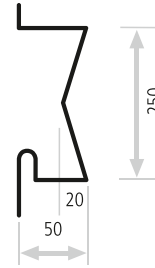
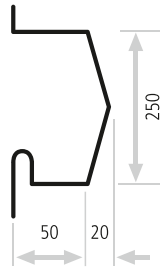
MM® Art. No.

G-E 50/250



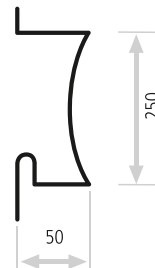
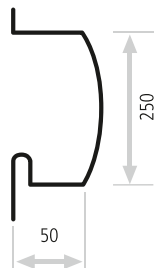
G-T 70/250

G-DA 70/250



G-DI 50/250

G-RA 70/250



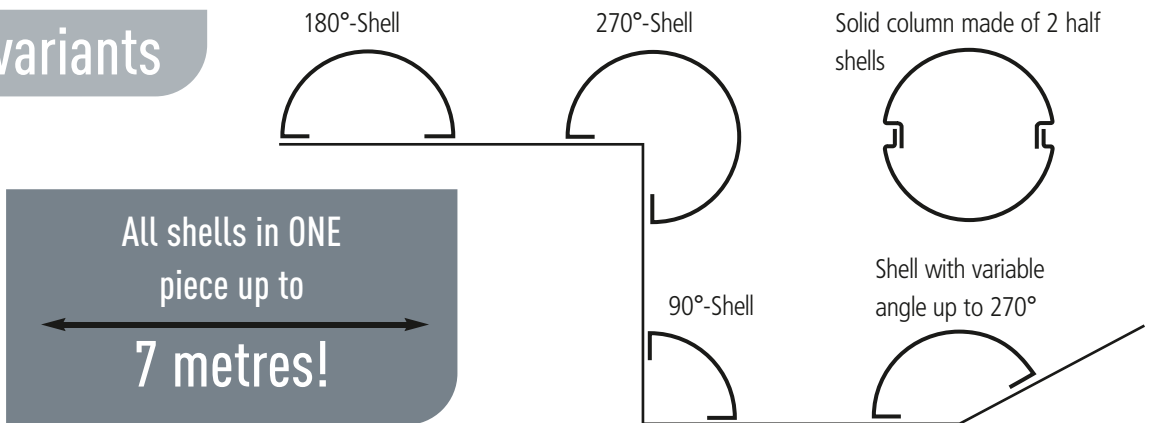
G-RI 50/250

colTEC[®] – High-quality and modern Column Cladding

colTEC[®] column cladding opens new vistas for your creativity and provides fascinating opportunities for challenging architecture and exhibition stand construction. Apart from the classical use as solid-column linings, colTEC[®] also offers several possibilities for

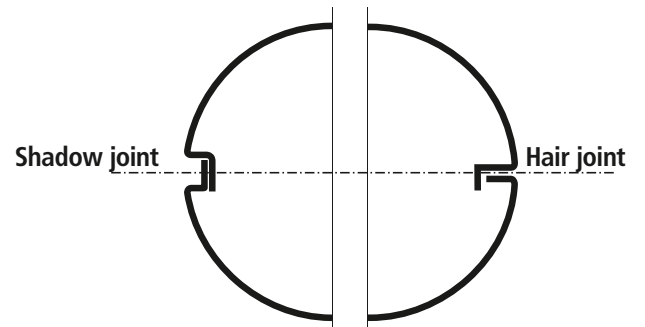
designing walls and corners, e.g. with half and quarter shells. Furthermore, it is possible to produce characters or cutouts in order to integrate functional elements or to achieve special effects by back-lighting.

Shape variants



Joint designs

In the field of joint design, it is also possible to adapt colTEC[®] column linings to the respective requirements of the designer, i.e. the joint can either be deliberately highlighted by a shadow joint, or it can be discretely suppressed by a hair joint with invisible fixing.



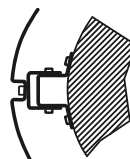
Mounting

Shadow joint

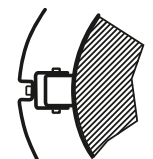
Bolted directly
D = Column without casing + 40 mm



with U-profile, bolted
D = Column without casing + 140 mm

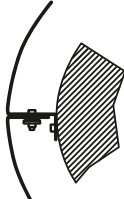


with U-profile, clamped
D = Column without casing + 140 mm

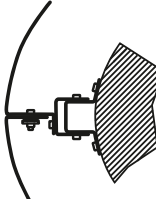


Hair joint

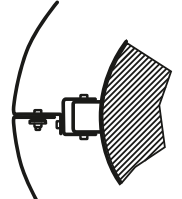
Bolted directly
D = Column without casing + 120 mm



with U-profile, bolted
D = Column without casing + 220 mm



with U-profile, clamped
D = Column without casing + 220 mm





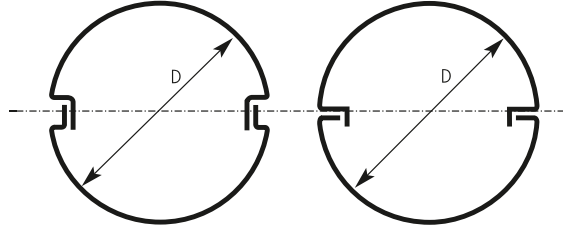
MM[®] Art. No.

Sketch

MM[®] Art. No.

RK-S
Circle

Joint design
Shadow
joint

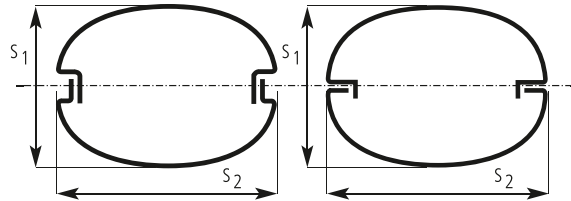


RK-H
Circle

Joint design
Hair
joint

RE-S
Ellipse

Joint design
Shadow
joint



RE-H
Ellipse

Joint design
Hair
joint



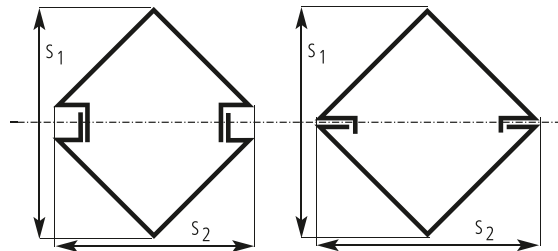
MM[®] Art. No.

Sketch

MM[®] Art. No.

ED-S
Triangle

Joint design
Shadow
joint

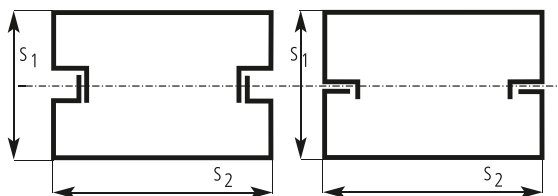


ED-H
Triangle

Joint design
Hair
joint

ER-S
Rectangle

Joint design
Shadow
joint

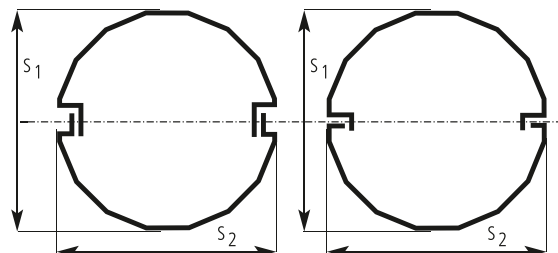


ER-H
Rectangle

Joint design
Hair
joint

EP-S
Polygon

Joint design
Shadow
joint



EP-H
Polygon

Joint design
Hair
joint

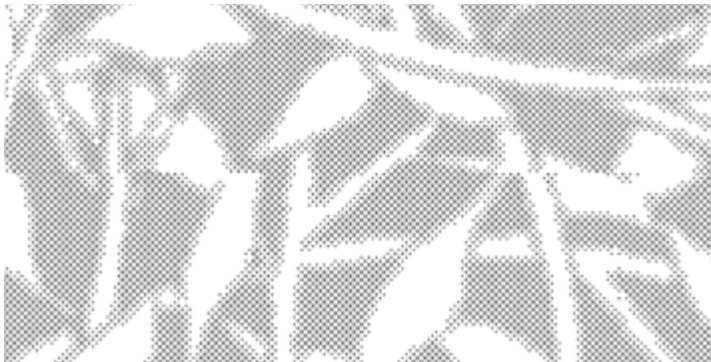


MN[®] planTEC[®] Perforated and Embossed Plates

planTEC[®] – Perforated and Embossed Sheets in a Variety of Patterns

By using planTEC[®] sheets there are almost no limits to your imagination when designing walls, ceilings and floors. planTEC[®] perforated and embossed sheets provide excellent functionality as well as

optical features. For example, perforated sheets can be used for acoustic insulation or for rear lighting; MN embossed sheets can be supplied with excellent load-bearing properties.



Individual perforation for cladding such as:

- Cassettes
- Panels
- Single surfaces



Group Perforated Plates

MN[®] Art. No.

Sketch

examples

<p>Rg w/t</p>		<p>Rg - 2/6.06 Rg - 2.2/4 Rg - 10/20</p>
<p>Rv w/t</p>		<p>Rv - 5/8 Rv - 10/20</p>



Group Perforated Plates

MM® Art. No.

Sketch

Examples

Qg w/t

Qg-8/15
Qg-10/20
Qg-20/40

Qv w/t

Qv-8/15
Qv-10/20
Qv-20/40

Lg w/t-t1/t2

Lg-3/6-9.5/13.5
Lg-7/15-15/25
Lg-10/25-20/30

Lv w/t-t1/t2

Lv-7/15-15/25

Block perforation

Block and special perforations (e.g. 6x round hole) can be produced using the above examples.
On request: non-perforated edges, edgings, combination with **wellTEC**®/**colTEC**®

Special perforation



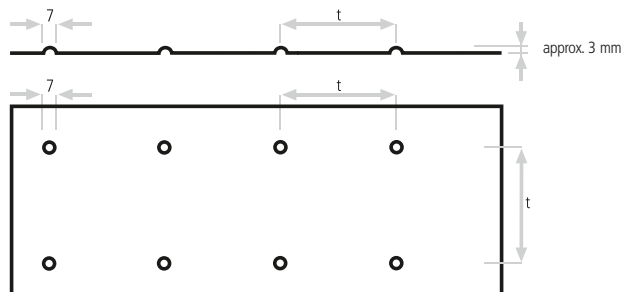
MM® Art. No.

Sketch

Examples

RNg 7-t

Round stud Straight
(ball shaped)

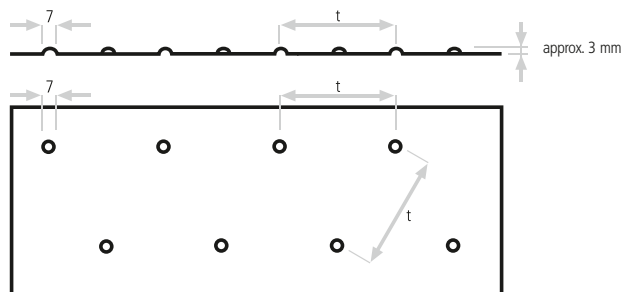


t min. 40 mm
s = 1.5 mm

Formats:
1,000 x 2,000 mm
1,250 x 2,500 mm
1,500 x 3,000 mm

RNv 7-t

Round stud Offset
(ball shaped)

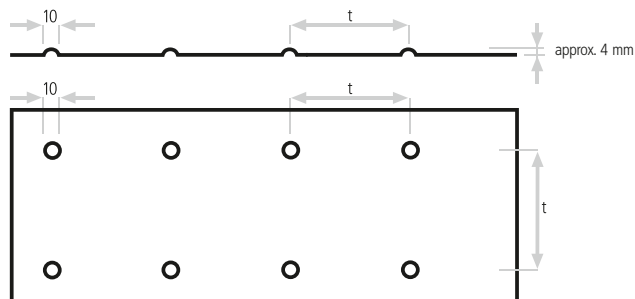


t min. 40 mm
s = 1.5 mm

Formats:
1,000 x 2,000 mm
1,250 x 2,500 mm
1,500 x 3,000 mm

RNg 10-t

Round stud Straight
(ball shaped)

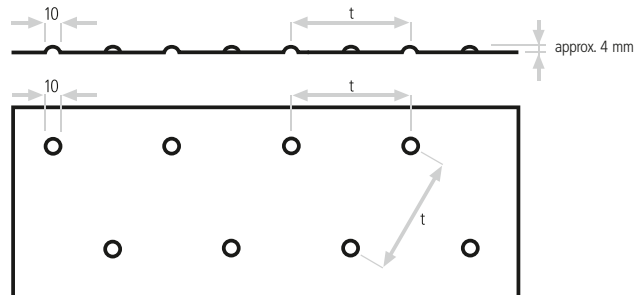


t min. 50 mm
s = 1-2 mm

Formats:
1,000 x 2,000 mm
1,250 x 2,500 mm
1,500 x 3,000 mm

RNv 10-t

Round stud Offset
(ball shaped)



t min. 50 mm
s = 1-2 mm

Formats:
1,000 x 2,000 mm
1,250 x 2,500 mm
1,500 x 3,000 mm

Group Embossed Sheets

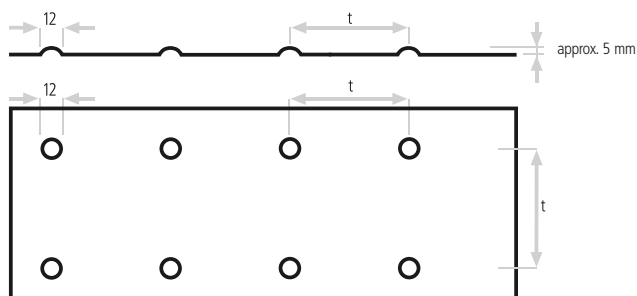
MN® Art. No.

Sketch

Examples

RNg 12-t

Round stud Straight
(ball shaped)

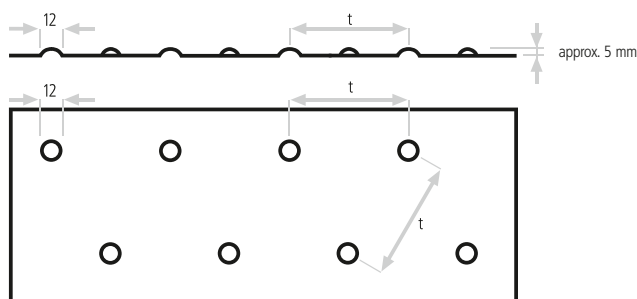


t min. 50 mm
s = 2-3 mm

Formats:
1,000 x 2,000 mm
1,250 x 2,500 mm
1,500 x 3,000 mm

RNv 12-t

Round stud Offset
(ball shaped)

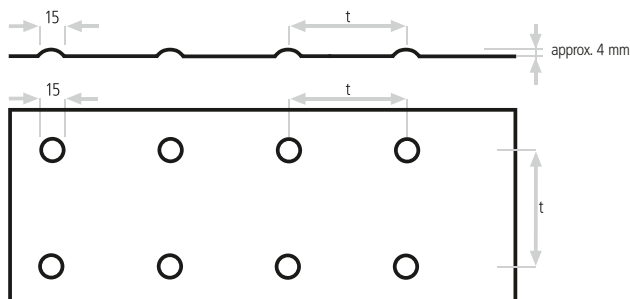


t min. 50 mm
s = 2-3 mm

Formats:
1,000 x 2,000 mm
1,250 x 2,500 mm
1,500 x 3,000 mm

RNg 15-t

Round stud Straight
(ball shaped)

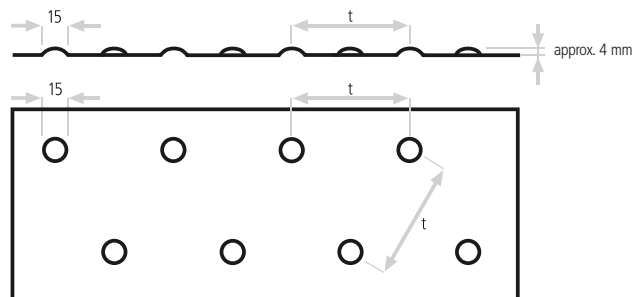


t min. 50 mm
s = 2 mm

Formats:
1,000 x 2,000 mm
1,250 x 2,500 mm
1,500 x 3,000 mm

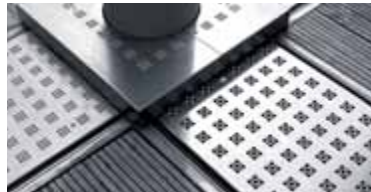
RNv 15-t

Round stud Offset
(ball shaped)



t min. 50 mm
s = 2 mm

Formats:
1,000 x 2,000 mm
1,250 x 2,500 mm
1,500 x 3,000 mm



MM® Art. No.

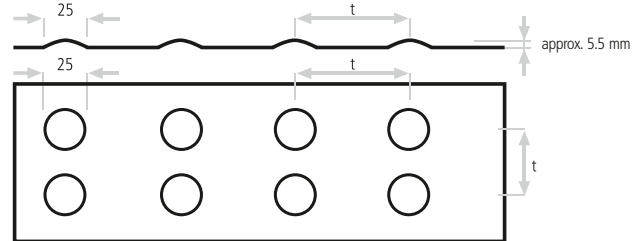
Sketch

Examples

NEW

RNg 25-t

Round stud Straight
(ball shaped)



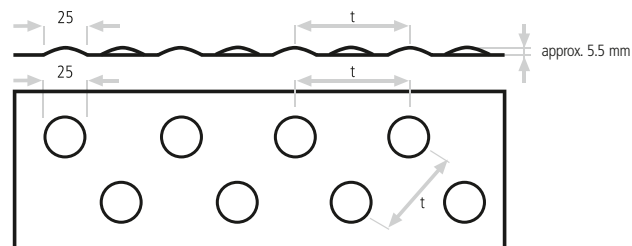
t min. 80 mm
s = 1.5 mm

Formats:
1,000 x 2,000 mm
1,250 x 2,500 mm
1,500 x 3,000 mm

NEW

RNV 25-t

Round stud Offset
(ball shaped)

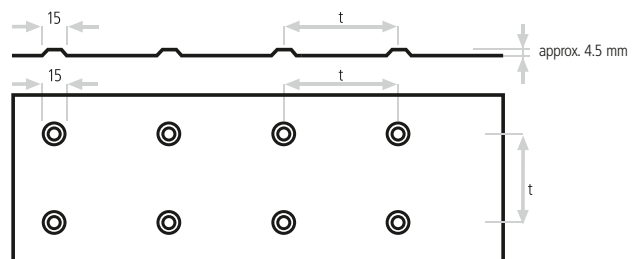


t min. 80 mm
s = 1.5 mm

Formats:
1,000 x 2,000 mm
1,250 x 2,500 mm
1,500 x 3,000 mm

RNg 15-t

Round stud Straight
(with plateau)

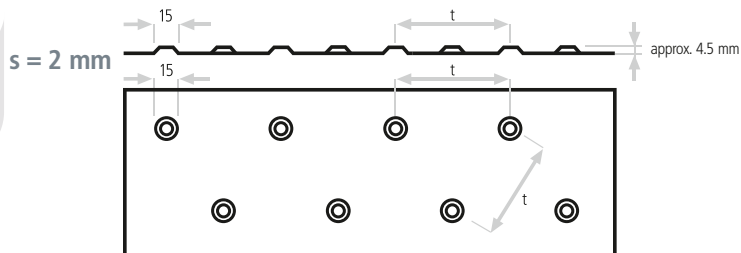


t min. 50 mm
s = 2 mm

Formats:
1,000 x 2,000 mm
1,250 x 2,500 mm
1,500 x 3,000 mm

RNV 15-t

Round stud Offset
(with plateau)



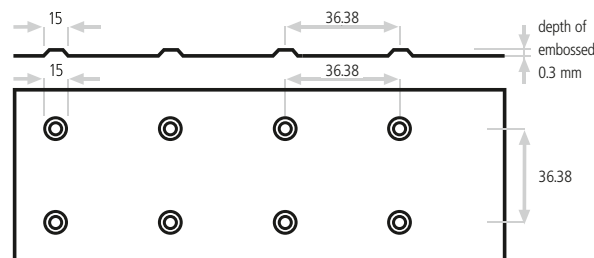
t min. 50 mm

Formats:
1,000 x 2,000 mm
1,250 x 2,500 mm
1,500 x 3,000 mm

NEW

RNg 15-36.38

Round stud Straight
(with plateau)



s = 2 mm (1.5)

Formats:
1,000 x 2,000 mm
1,250 x 2,500 mm
1,500 x 3,000 mm

Group Embossed Sheets

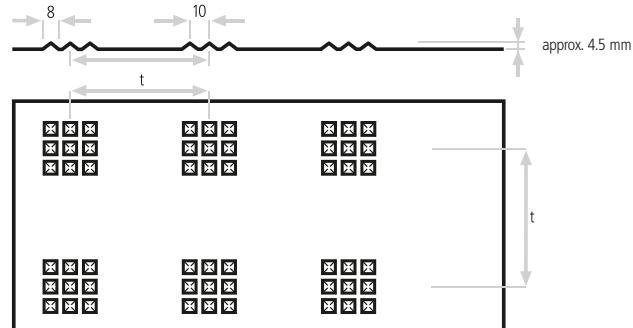
MM® Art. No.

Sketch

Examples

PNg 8-t

Pyramid stud
Straight

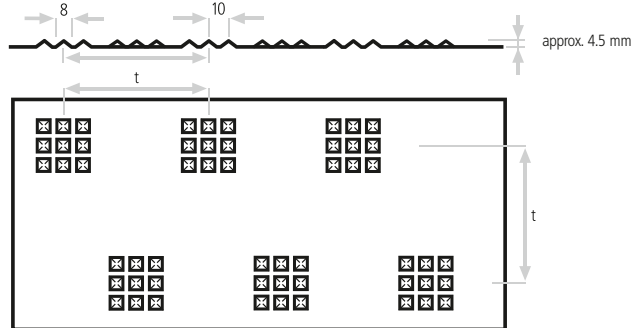


t min. 60 mm
s = 1.25 mm

Formats:
1,000 x 2,000 mm

PNv 8-t

Pyramid stud
Offset

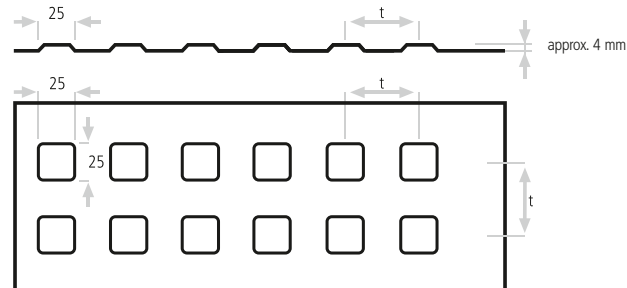


t min. 60 mm
s = 1.25 mm

Formats:
1,000 x 2,000 mm

QNg 25-t

Square stud
Straight

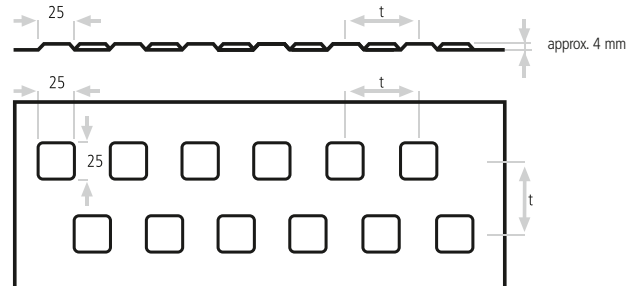


t min. 50 mm
s = 2 mm

Formats:
1,000 x 2,000 mm
1,250 x 2,500 mm
1,500 x 3,000 mm

QNV 25-t

Square stud
Offset



t min. 50 mm
s = 2 mm

Formats:
1,000 x 2,000 mm
1,250 x 2,500 mm
1,500 x 3,000 mm



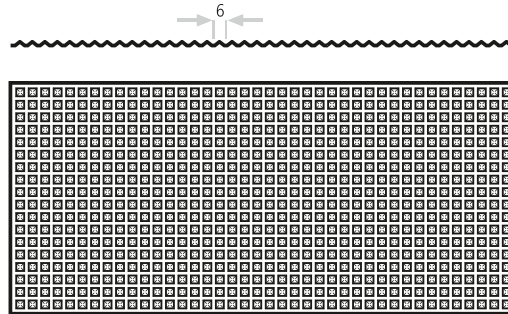
Group Embossed Sheets

MM Art. No.

Sketch

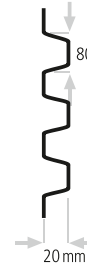
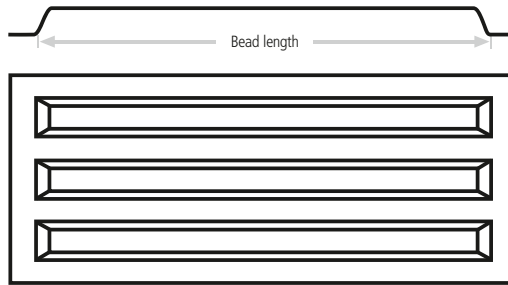
Examples

PNg 6/6
Pyramide stud



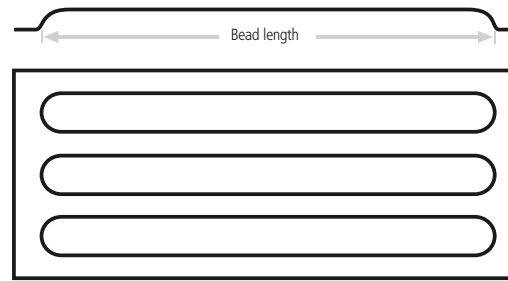
s = 1 mm
Length:
6,000 mm

TS-20/80
Trapezoidal bead



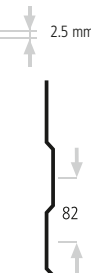
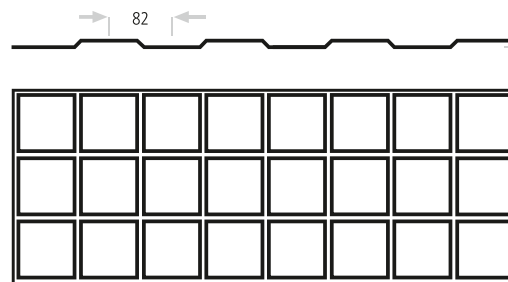
Bead length:
444 mm
974 mm
2,174 mm

RS-15/40
Round bead



Bead length:
1,000 mm up to
5,000 mm

KS-2.5/82
Cross bead



Cruciformed in
82 mm grid
Sizes up to:
1,250 x 2,500 mm



Customer Service – For Individual Requirements

Alongside our high standards of quality and ability to meet deadlines, customer service is also extremely important to us. Our strength lies in providing individually tailored solutions for our customers. For architects, engineering firms or construction companies; for serial or individual production; from consultation to manufacture. Use our enquiry/quotation form or contact us personally. We look forward to hearing from you!

Orders

You can place your order easily and directly with **MN**:

Over the Phone: +49 (0) 45 61 / 51 79 - 0 from 8 a.m. to 4 p.m. MEZ

By Fax: +49 (0) 45 61 / 51 79 - 70
together with the following fax form and attached drawings.

By E-Mail: info@mn-metall.de or <first name.last name>@mn-metall.de

For further up-to-date information please see our website:

www.mn-metall.de

Tender text proposals are shown at the end of this catalogue.

wellTEC[®] Page 37

colTEC[®] Page 38

planTEC[®] Page 39

General note:

This brochure is based on information available on going to print. Errors excepted. In case of product change or improvement, information contained in this brochure may be altered or withdrawn without prior announcement.

wellTEC[®], colTEC[®] und planTEC[®] are registered trademarks of Metallverarbeitung Neustadt GmbH.

The general terms and conditions of sale and supply for Metallverarbeitung Neustadt GmbH shall apply. Metallverarbeitung Neustadt GmbH reserves the right to allow for a variation in delivery of up to 10 % for the final formats within manufacturing. There may be differences in the details and the actual colour of the products compared to the illustrations in the brochures. The manufacture of all products is done according to the factory standards of Metallverarbeitung Neustadt GmbH. This product list is subject to technical changes in dimensions and design. This product list replaces all previous product lists.



To +49 (0) 45 61 / 51 79 70

Sender

Company

Contact

Street

Postal Code/Place

Telephone

Fax

E-Mail

Please prepare a quotation for following range:

Group

Art. No.

Material

Quantity

Surface

Material thickness

Dimensions

wellTEC[®]

Pitch of corrugations (h) mm

Width of corrugations (b₁) mm

Panel length (l) mm

Overall width (b₂) mm

colTEC[®]

Type of join

Length mm

Diameter ø mm

and/or principal dimensions

planTEC[®]

Panel length mm

Panel width mm

Custom metal plates

Panel length mm

Panel width mm



Tender Text Proposal

Item	Quantity Pcs/m ²	Descriptions	EP	Total
.....	wellTEC®-Group
.....	MN Art. No.
.....	Material
.....	Corrugation height (h)	mm
.....	Corrugation width (b ₁)	mm
.....	Thickness (s)	mm
.....	Overall length (l)	mm
.....	Overall width (b ₂)	mm
.....	Bowing	yes <input type="checkbox"/> no <input type="checkbox"/>
.....	Radius	mm
.....	Arc length	mm
.....	Surface
.....	Mill finish
.....	Ground one side
.....	Ground both sides
.....	other surfaces
.....	Coated according to RAL, on one side
.....	Coated according to RAL, on both sides
.....	Befestigung
.....	Screws
.....	Spacer



Metallverarbeitung Neustadt GmbH · Industrieweg 34 · D-23730 Neustadt
 Tel.: +49 (0) 45 61 / 51 79 - 0 · Fax: +49 (0) 45 61 / 51 79 - 70
 E-Mail: info@mn-metall.de · Internet: www.mn-metall.de



Europäische Forschungsgesellschaft
 für Blechverarbeitung e.V.
 European Research Association for Sheet Metal Working

General note:

The general terms and conditions of sale and supply for Metallverarbeitung Neustadt GmbH shall apply. Metallverarbeitung Neustadt GmbH reserves the right to allow for a variation in delivery of up to 10 % for the final formats within manufacturing. There may be differences in the details and the actual colour of the products compared to the illustrations in the brochures. The manufacture of wellTEC® products is done according to the factory standards of Metallverarbeitung Neustadt GmbH, as based on DIN 59231. This product list is subject to technical changes in dimensions and design. This product list replaces all previous product lists.



Tender Text Proposal

Item	Quantity Pcs/m ²	Descriptions	EP	Total
.....	colTEC®-Group
.....	MN Art. No.
.....	Type of joint
.....	Material
.....	Thickness mm
.....	Dimensions
.....	Length mm
.....	Diameter ø and/or principal dimensions mm
.....	Surface
.....	Bright rolled
.....	Ground one side
.....	Other surfaces
.....	Coated according to RAL, on one side



Metallverarbeitung Neustadt GmbH · Industrieweg 34 · D-23730 Neustadt
 Tel.: +49 (0) 45 61 / 51 79 - 0 · Fax: +49 (0) 45 61 / 51 79 - 70
 E-Mail: info@mn-metall.de · Internet: www.mn-metall.de



Europäische Forschungsgesellschaft
 für Blechverarbeitung e.V.
 European Research Association for Sheet Metal Working

General note:

The general terms and conditions of sale and supply for Metallverarbeitung Neustadt GmbH shall apply. Metallverarbeitung Neustadt GmbH reserves the right to allow for a variation in delivery of up to 10 % for the final formats within manufacturing. There may be differences in the details and the actual colour of the products compared to the illustrations in the brochures. The manufacture of colTEC® products is done according to the factory standards of Metallverarbeitung Neustadt GmbH. This product list is subject to technical changes in dimensions and design. This product list replaces all previous product lists.



Tender Text Proposal

Item	Quantity Pcs/m²	Descriptions	EP	Total
.....	planTEC® -Groupe
.....	MN Art. No.
.....	Material
.....	Thickness (s) mm
.....	Overall length (l) mm
.....	Overall width (b) mm
.....	Surface
.....	Mill finish
.....	Ground one side
.....	Ground both sides
.....	Other surfaces
.....	Coated according to RAL, on one side.
.....	Coated according to RAL, on both sides.



Metallverarbeitung Neustadt GmbH
 Industrieweg 34 · D-23730 Neustadt
 Tel.: +49 (0) 45 61 / 51 79 - 0 · Fax: +49 (0) 45 61 / 51 79 - 70
 E-Mail: info@mn-metall.de · Internet: www.mn-metall.de



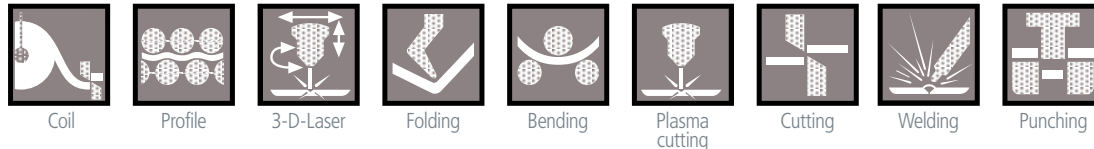
Europäische Forschungsgesellschaft
 für Blechverarbeitung e.V.

General note:

The general terms and conditions of sale and supply for Metallwarenfabrik Neustadt GmbH shall apply. Metallwarenfabrik Neustadt GmbH reserves the right to allow for a variation in delivery of up to 10 % for the final formats within manufacturing. There may be differences in the details and the actual colour of the products compared to the illustrations in the brochures. The manufacture of planTEC® products is done according to the factory standards of Metallwarenfabrik Neustadt GmbH. This product list is subject to technical changes in dimensions and design. This product list replaces all previous product lists.

A New Perspective on Creativity

We put sheet metal into form



MN's focus is on precision in every aspect of sheet metal handling – from creative designs to constructive processing. With our modern equipment and highly qualified personnel we satisfy the diverse wishes from our customers world-wide: architects, industry or craftsmen. The creative possibilities of MN Metallwarenfabrik Neustadt GmbH are best seen in our sheets for roofing and facades, designed to high aesthetical standards, as well as in our state-of-the-art column casings, perforated sheets and embossed plates. With our sophisticated 3-D-laser cutting system together with laser welding we provide individual and cost-efficient solutions. Please contact us for details.

Our foreign partners:

Benelux

MCS Metal Cladding Systems bv
Luchtenburg 16
NL 4031 KE Ingen
Tel.: +31 - 344 693 391 Fax: +31 - 344 614 333
E-Mail: info@metalcladding.nl

Czech Republic

Kovove Profily spol. s.r.o., Podnikatelska. 545,
CZ - 190 11 Praha 9 - Bechovice
Mr. Zbynek Vitosek
Tel.: +420 - 267 090 211, Fax: +420 - 281 932 300
E-Mail: servis@kovprof.cz, www.kovprof.cz

Danmark

Muncholm A/S, Tolsagervej 4, DK - 8370 Hadsten
Mr. Lars Pedersen
Tel.: +45 - 862 150 55, Fax: +45 - 862 133 99
E-Mail: inp@muncholm.dk, www.muncholm.dk

Great Britain

Cadisch MDA Ltd.
Unit 1, Finchley Industrial Centre
879 High Road, Finchley
London N12 8QA
Mr. Anthony Millington
Tel.: +44 - (0)20 8492 7622, Fax: +44 - (0)20 8492 0333
E-Mail: info@cadisch.com, www.cadisch.com

Greece

AMPI - Construction Solutions
I & M Fotiadis Bros Co.
56 Geor. Papandreou Str.
GR 16231 Athens
Mr. John Fotiadis
Tel.: +30 - 21076 616 71, Fax: +30 - 21076 612 80
E-Mail: info@ampi.gr

Israel

Golmat Ltd., P.O. BOX 2058, IL-46120 Herzlia
Mrs. Nicole Dugin
Tel.: +972 - 995 561 51, Fax: +972 - 995 715 53
E-Mail: golmat@netvision.net.il

Italia

EU-CO s.r.l., Facciate architettoniche, Via Zorutti, 145,
I - 33030 Campoformido (Ud)
Mr. Giancarlo Di Bert
Tel.: +39 - 043 265 26 67, Fax: +39 - 043 266 37 48
E-Mail: dibert@eucogroup.com, www.eucogroup.com

KUWAIT

KUWAIT AHLI ALUMINIUM, Manufacturing Co. W.L.L.
Ghazali Street, KWT - 70654 Shuwaikh
Tel.: +965 - 474 77 41, Fax: +965 - 473 67 01

Norway

alunor metall as
Vollsveien 13H
N 1366 Lysaker
Mr. Ottar E. Jørgensen
Tel.: +47 - 230 065 80, Fax: +47 - 230 065 81
E-Mail: alunor@alunor.no

Portugal

METALDATA Equipamentos Tecnicos e Industriais, Lda.
E.N. 249-4-R Alfredo da Silva, Lote 4
Zona Industrial Aboboda - Trajouce
2785-656 S Domingos de Rana
Mr. Sergio Barata
Tel.: +351 - 21 445 91 00, Fax: +351 - 21 445 91 15
E-Mail: sergio.barata@metaldadata.pt

Spain

ALU-STOCK S.A., Landalucia 1, Parque Industrial de Jundiz,
E-01015 Vitoria, Mrs. Maribel Mendez
Tel.: +34 - 945 290 097, Fax: +34 - 945 291 764
m.mendez@alu-stock.es, www.alu-stock.es



Europäische Forschungsgesellschaft
für Blechverarbeitung e.V.



MN Metallverarbeitung Neustadt GmbH · Industrieweg 34 · 23730 Neustadt
Tel.: +49 (0) 45 61 / 51 79 - 0 · Fax: +49 (0) 45 61 / 51 79 - 70

E-Mail: info@mn-metall.de · Internet: www.mn-metall.de



Metallverarbeitung Neustadt GmbH